

Clavierconcerte, Johann Sebastian Bach, D. 944, 1740
**Westside Music Foundation
&
Los Angeles Doctors Symphony Orchestra**



**88 Piano Keys
A Benefit Concert for Music Education**

Friday, May 4, 2007, 7:00 p.m.

**The Olympic Collection—Grand Ballroom
11301 Olympic Boulevard
West Los Angeles 90064**

THANK YOU!

James Steeber, Acting Director
Makia Matsumura, Production Coordinator

Yamaha Artist Services, Inc.
689 Fifth Avenue, Third Floor
New York, NY 10022

<http://www.Yamaha.com/yasi>
<http://www.YamahaArtistServices.com>

YAMAHA PIANOS

provided courtesy of
Yamaha Corporation of America

THANK YOU!

Mark Hullibarger
Yamaha Piano Technician

P & O Movers

Mark Moralez
Printing Palace

WELCOME!

88 Piano Keys
A Benefit Concert for Music Education

will raise funds to

- 1) Establish an instrumental music program at St. Anne School, a Kindergarten-8th Grade, Title I school in Santa Monica with 70% of its students qualifying for the Federal Free Lunch Program (family income at or below 130% of the federal poverty level).
- 2) Support the Los Angeles Doctors Symphony Orchestra's commitment to provide several low-cost/free concerts annually to the public at various concert sites throughout Los Angeles and Southern California.

WE HOPE YOU ENJOY THE EVENING

88 Piano Keys

A Benefit Concert for Music Education

Schedule of Events

7:00 p.m.No-Host Bar

7:15 p.m.Salad

7:30 p.m.Dinner
Introductions
Announcements

8:00 p.m.Dessert
Coffee & Tea

8:30 p.m.Concert

88 Piano Keys

A Benefit Concert for Music Education

Concert Program

Overture to *Candide*..... L. Bernstein

Piano Concerto No. 21 in C Major, K. 467..... W.A. Mozart

- | | | |
|------|---------|-------------------|
| I. | Allegro | Lawrence Lee |
| II. | Andante | Harriette Tuntomo |
| III. | Rondo | Shannon Hsu |

Students from the Acevedo Music & Art Education Foundation

Concerto for Two Pianos in d minor..... F. Poulenc

- | | |
|------|------------------------|
| I. | Allegro ma non troppo |
| II. | Larghetto |
| III. | Finale (Allegro molto) |

Sylvie Ollivier Moreland & Deborah H. How

Piano Concerto No. 10 (Two Pianos)..... W.A. Mozart
in E-flat Major, K. 365

- | | |
|------|---------|
| I. | Allegro |
| II. | Andante |
| III. | Rondo |

Rufus Choi & Christopher Weldon



Westside Music Foundation

Board of Directors

Deborah H. How
President (Co-Founder)

Elaine Dai
Vice President-Compliance

Dr. Christopher Weldon
Vice President-Programs

Diane L. Bloomer
Treasurer (Co-Founder)

Sylvie Ollivier Moreland
Secretary

Mission Statement

To promote musical culture and the pursuit of excellence in the field of music education in the West Los Angeles environs and community for people of all socio-economic backgrounds.

The Westside Music Foundation will promote musical culture and appreciation by providing high-quality musical concerts and activities to the public, featuring professional artists and leading educators, free of charge, by voluntary donation, or for a nominal fee to cover costs.

The Westside Music Foundation will also work to provide educational opportunities to the public, with a particular emphasis on youth programs, to promote the importance of music, and to help others develop appreciation, understanding, skill, and proficiency in music through music education.

Our goal is to provide high-quality musical education opportunities, particularly to youth who otherwise do not have access to top-caliber teachers and musicians as mentors due to financial means or lack of exposure due to socio-economic background.

www.westsidemusicfoundation.org

Los Angeles Doctors Symphony Orchestra



www.ladso.org

Founded in 1953, the *Los Angeles Doctors Symphony Orchestra*, presently under the leadership of Music Director and Conductor, Ivan Shulman, is one of the oldest community orchestras in the United States having its origin in the health professions, still presenting regular concerts. A number of its members are physicians, dentists, or allied health professional women and men in medicine and other healing arts. In recent years, the orchestra has been expanded to include many non-medical members of the community from the Los Angeles area.

The aims of the orchestra are to provide a fellowship in both music and medicine for its members, to contribute culturally to the community, and to help raise funds for medical and other charities through its concerts. The orchestra welcomes contributions, both musical and financial, to sustain its efforts to provide frequent concerts at little or no cost to the public.

Los Angeles Doctors Symphony Orchestra

MUSIC DIRECTOR

Ivan Shulman

VIOLIN

Shura Sasaki

Concertmaster

Karen Scharre, M.D.

Principal 2nd Violin

Erwin R. Blum, M.D.

Helen J. Brown, Ph.D.

Richard Chen, M.D.

Linnea Eades

Carissa Gibson

Jerome Greenberg, M.D.

Ethel McClatchey

Shelly Mendelson

Aida Monte

Tomoko Nagakawa

Joe Nankin

Barbara Reisner

Jane Schaad

Janice Schilling, M.D.*

Gloria Sherwood, Ph.D.

Lydia Steadman

Sol Stone

Kirika Suzuki

Amy Tan

VIOLA

Marilyn Baker

Principal

Cecile Asuncion

Kitten Converse

Lisa Hoffman

Ray Dean Mize

Amy Stewart

VIOLINCELLO

Francesca Bori, MT-BC

Principal

Eleanor Axe, M.D.

George Emerson, M.D.

Barbara Harmon

Janice Hill

Carey Beth Hockett

Robin R. Hudson, R.N.

Jonathan Jahr, M.D.

Anthony McAlister

Cheryl Puntil-Ocheltree,
R.N., M.N.

Kevin Tseng

DOUBLE BASS

Louis Fantasia

Mary Lou Rotenberg, M.D.

Principal

Michael Saucier

FLUTE

Kenneth Alexander, Ph.D.

Principal

Nora Graham

Alice Song, M.D.

OBOE

Naomi Ozawa

Principal

Jessica Tritsch

CLARINET

Stephen A. Korn*

Myer Jacobs

Principals

Simon Gamer, D.D.S.

Daryl Mettler

Julia Song, M.D.

BASSOON

Charles Converse

Justin Paguio

FRENCH HORN

Russ Graham

Principal

James Graunke*

John A. Putnam

Alvin Rosenbloom*

TRUMPET

Jason K. Axe, J.D.

Robert Orlando, M.D.*

TROMBONE

Peter Brown

Bill White, M.A.

Ed Weiss

PERCUSSION

Seiji Kashioka, Ph.D.

Principal

Joseph Braun, Ph.D.

Stanley Hecht*

Jesse Hellen-Lloyd

LIBRARIAN

Seiji Kashioka, Ph.D.

Bill White, M.A.

Assistant

CONCERT MANAGER

Ethel McClatchey

PROGRAM NOTES

Ivan Shulman

OFFICERS

Richard Chen, M.D.

President

Ethel McClatchey

Vice-President

Kenneth Alexander

Treasurer

Lydia Steadman

Secretary

*on leave

*The Orchestra wishes to
thank the Los Angeles
Public Library, Art Music
and Recreation
Department for the loan of
music scores.*

*Rehearsal space made
available by the Westside
Community Adult School
at Fairfax High School.*

Concert Program Notes

Bernstein: Overture to *Candide*

Begun in 1954, Bernstein's collaboration with the playwright Lillian Hellmann on the conversion of Voltaire's *Candide* to a Broadway musical was anything but easy, and a happy resolution of the endeavor has never been completely fulfilled to this day. The overture is a mix of tunes from the musically episodic score, constructed in an almost classic sonata form featuring "Oh, Happy We" as the second theme. The love song ends in a grand pause, wherein the overture concludes in a manner of *La Gazza Ladra* from a distance, to Cunegonde's song "Glitter and Be Gay" marching forward to a rollicking finish with the first theme returning.

Mozart: Piano Concerto No. 21 in C Major, K. 467

Written in 1785, this piano concerto follows the great d minor concerto, K. 466, which the Doctors Symphony performed just last month. These two works, so close in time yet so different in substance and character, are among the glories of his output, and with them Mozart seems to have created a new kind of concerto, more symphonic and more complex than ever before. The first movement is very broadly conceived, with the majesty and vastness of his grandest symphonies. The second movement, in F major, is operatic in nature, full of emotion and expressivity. The final rondo, perhaps somewhat understated, balances the energy and emotion of the earlier movements, while offering a radiance and beauty all its own.

Poulenc: Concerto for Two Pianos in d minor

As a quintessentially French composer, Francis Poulenc wrote this concerto in 1932 while living in Boston, and certainly placed a wide variety of cosmopolitan musical influences into this unusual and amusing creation. The first movement has been described as containing elements of a jazzy Parisian dance hall of the silent film era, and of a gamelan which Poulenc was said to have heard at the Colonial Exposition in Paris in 1931. The second movement opens

as a classic Mozart concerto, but modulates to a romantic early 20th-century tune, then back to a quote of the C Major Mozart Piano Concerto we have just heard, and finally to the gamelan again. The finale is a mélange of many of the earlier elements of the concerto, while interposing a tango as well as the *Sewanee River* into the mix. Deceptively simple on the surface, the concerto reflects Poulenc's deep and skillful musical palette.

Mozart: Piano Concerto No. 10 (Two Pianos) in E-flat Major, K. 365

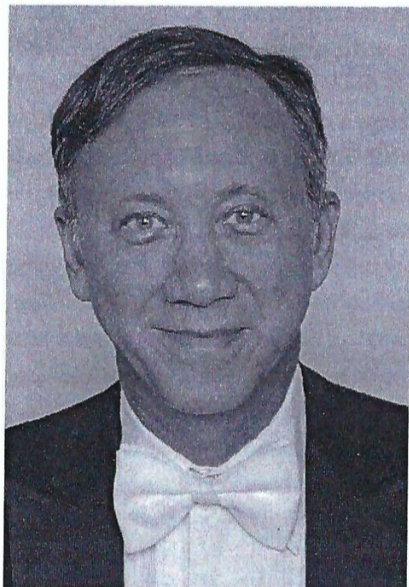
Mozart composed this concerto in 1779 to play with his older sister Nannerl. As a respectful brother, Mozart was careful to divide up the solo material fairly evenly, in a manner that offers more than a contest for two soloists. The soloists enter the first movement with a set of trills that serve as an introduction to the relatively simple first theme, which returns later in classic sonata form. The slow movement is delicate and refined, with much decorative material to be exchanged by the soloists in a musical dialogue. For the most part, the orchestra stays in the background and allows the pianists to come forth poetically. The Rondo finale is vigorous and full of rhythmic drive coupled with elegance and grace.

-Ivan Shulman

About the Artists

Los Angeles Doctors Symphony Orchestra

Ivan Shulman, Music Director, grew up in a musical family, having studied oboe with his father, the noted oboist Harry Shulman. In his youth he spent time in Aspen where he studied orchestration with Gordon Hardy and composition with Charles Jones and Darius Milhaud. There he began his conducting studies with Walter Susskind and Wolfgang Vacano. After many years as an oboist, he became Music Director of the Los Angeles Doctors Symphony Orchestra in 1990, and has since conducted the orchestra in concerts in Los Angeles, Santa Barbara, San Francisco and Santa Fe.



He has appeared as guest conductor with the Beach Symphony in Torrance, the West Coast Symphony in Santa Barbara, the Brentwood-Westwood Symphony, the Topanga Philharmonic, the West Hollywood Orchestra, the Dalhousie University Chorus in Halifax, Nova Scotia and the Kenai Peninsula Orchestra in Alaska. He has led the Nevada State Opera in performances of *Don Giovanni* and *Carmen*. In 2001, he made

his European conducting debut with the Pleven Philharmonic in Bulgaria. He was honored at Dalhousie University in Halifax, Nova Scotia in 2004 as a Visiting Professor of the Humanities. Currently, he is enrolled as a candidate for a Master of Music degree in conducting at California State University at Long Beach.

Mozart: Piano Concerto No. 21 in C Major, K. 467

Lawrence Lee, age 14, began playing the piano at age five; he has studied with Yin-Yin Huang Acevedo since he was nine. He has won third place in the MTAC Scholarship Competitive two consecutive years and has also been a winner in both the Southwestern Youth Music Festival and Los Angeles Bach Junior Festival. Lawrence has performed in the Acevedo Beau Arts and Music Festival and the Tsunami Fund Raising Concerts. He also plays annual Christmas Concert performances at Villa Gardens, where he enjoys entertaining senior citizens.

Besides the piano, Lawrence also plays the erhu, a Chinese two-stringed instrument, which he has performed solo in several events. He is grateful for the opportunity given by Conductor Ivan Shulman and feels that it is a privilege to perform with the Los Angeles Doctors Symphony Orchestra.

Harriette Tuntomo, age 11, is a sixth-grade student at Gorman Learning Center. She began studying piano with Yin-Yin Huang Acevedo at the age of seven. Harriette's achievements include winning awards and prizes at the CAPMT Bartok and Contemporary Music Festival, MTAC-Los Angeles Sonata Festival, MTAC Scholarship Competition, 41st Annual Southwestern Youth Music Festival, and the MTAC-WLA Alice Frazier Kitchen Memorial Scholarship Competition. She has also been a winner at the SCJBF Bach Branch and Regional Festivals, and has participated in the Complete Works Auditions.

Besides competing, Harriette also enjoys performing for the community. She has performed in the MTAC-LA Tsunami Relief Fund Raising Concert and many other recitals at convalescent homes. She has also played together with members of Musical Connections, a non-profit organization dedicated to providing music to the public.

Shannon Hsu, age 13, is a student of Yin-Yin Huang Acevedo and has studied piano since she was six. Since then, she has been a winner at numerous competitions, including the MTAC-WLA Alice Frazier Kitchen Memorial Competition, Glendale Competition, Sonatina Festival, Los Angeles Scholarship

Competition, Southwestern Youth Music Festival (concerto and chamber music categories), and a first place at the CAPMT Romantic/Impressionist Festival.

Shannon is a student at Huntington Middle School, and was the pianist for the school orchestra during the 2005-2006 school year. A highlight for Shannon was her recent debut solo with the Los Angeles Symphony Orchestra.

Poulenc: Concerto for Two Pianos in d minor

Sylvie Ollivier received a Bachelor of Arts degree from Stanford University and a Master of Music degree in piano performance from the USC School of Music. She attended the Music Academy



of the West where she worked with Jerome Lowenthal and Gabor Rejto. Sylvie was a member of a clarinet trio coached by Mitchell Lurie, and they were winners at the Coleman Chamber Auditions. She has studied the piano with Adolph Baller, Daniel Pollack, and Antoinette Perry and has participated in piano master classes with Geza Anda and Wilhelm Kempff.

Sylvie serves on the Board of Directors of the Music Teachers' Association of California-West

Los Angeles and the Westside Music Foundation. She concertizes locally, performing in recital both as a soloist and as a chamber musician. She has performed on the Mid-Week Recital Series of the United Methodist Church of Santa Monica, and she has given benefit concerts for the Los Angeles Philharmonic Orchestra on behalf of the Santa Monica Westside Philharmonic Committee.

Deborah H. How is a candidate for the Ph.D. degree in historical musicology at the USC Thornton School of Music; she is a past recipient of USC's highest academic award, the All-University Predoctoral Merit Fellowship. Deborah received the M.A. degree in music from the UCLA School of the Arts and graduated from the External Examination (Honors) Program at Swarthmore College with the B.A. degree in music and theater studies. Her piano teachers include Sharon Lipman and Charles Abramovic, and she is presently coached by Antoinette Perry.



Deborah is currently on faculty at Mount St. Mary's College and the Aube Tzerko Piano Academy at New Roads High School. She has also been admitted to the prestigious Royal Conservatory of Music College of Examiners Apprentice Program.

Deborah is an active classical piano teacher and chamber music coach in Santa Monica; her students are perennial winners and performers at numerous events, including the MTAC State Solo/Concerto Competition, CAPMT State Honors Auditions, Southern California Junior Bach Festival Complete Works Auditions, Southwestern Youth Music Festival, World Piano Pedagogy Conference Master Classes, ESMF Glendale Piano Competition, and Cypress College Piano Competition.

She is past president of MTAC-WLA and currently serves as its Director of Information Technology. She also chairs the Solo Competition, Concerto Competitions, and Contemporary Music Festival. Deborah is the West Los Angeles coordinator of the Royal Conservatory of Music Examination program and is the co-founder and president of the Westside Music Foundation. Deborah is a member of Pi Kappa Lambda and an alumni interviewer for Swarthmore College.

Mozart: Piano Concerto No. 10 (Two Pianos) in E-flat Major, K. 365

Rufus Choi, pianist, has always felt his American birth and Korean heritage imparted an international aura and underlying wanderlust to a musical career which has found him performing in



all parts of the world from childhood to the present. Some of the countries which come to mind are, of course, America (as Yamaha Artist and guest artist on ABC, CBS, KKGO, and WQXR television and radio broadcasts and in solo appearances at notable venues, including the *Los Angeles* Music Center and AMRON solo recital at Zipper Hall, *New York* Lincoln Center and Weill Recital Hall solo program at Carnegie Hall, *Pasadena* Ambassador Auditorium, *San Francisco* Herbst Theatre,

Savannah Onstage in Georgia and as a major prize winner in the International Joanna Hodges Piano Competition in *Palm Desert*, and at the Louisiana International Piano Competition in *Alexandria*, including a solo performance with the Rapides Symphony Orchestra); *Austria* (*Salzburg* Festival); *Cyprus* (*Nicosia* Concerts and Master Classes); *England* (*Oxford* Philomusica performances); *France* (*Tours* Festival, performances in *Angoustrine* and *Osseja*); *Germany* (*Goettingen* Symphony Orchestra concert, as soloist with Martin Braus conducting, in a recent palace concert at the world famous *Herrenhausen Gardens*); *Italy* (Rovere D'oro International Piano Competition major prize winner); *Korea* (performance at *Seoul* Arts Center and at *Sejong* Hall, soloist with the *Puchon* Philharmonic, and major prize winner in the Han Romanson International Piano Competition); *Mexico* (performances in *Monterrey* and top prize in the Parnassos International Piano Competition) *Netherlands* (*Utrecht*

International Liszt Piano Competition and performances); *Russia* (*Moscow* International Tchaikovsky Piano Competition and Diploma Awards in 1998 and 2002); *Spain* (*Puigcerda* Festival); *Switzerland* (*Locarno* Music Festival); *Taiwan* (*Taipei* Music Festival at the National Concert Hall and major prize winner in the Taiwan International Piano Competition and soloist with the National Symphony Orchestra). This truly international artist is a graduate of The Juilliard School (BM, MM) and the Soloklassen at the Musik Hochschule in Hannover, Germany. His teachers include Vladimir Krainev, Konstantin Sirounian, Bruce Sutherland, and Oxana Yablonskaya.

Some future musical ventures include recordings in Russia for Classical Records. In addition, Mr. Choi will perform with the Russian Chamber Philharmonic orchestra in Germany during the 2007-2008 Concert Season. Also, he has been invited to perform for a documentary on "The Life of Franz Liszt" which will be broadcasted on PBS in 2008.

Pianist Christopher Weldon appears regularly throughout the United States as a soloist and chamber musician. Mr. Weldon's honors include first prize in the Kosciuszko National Chopin Competition, the Juilliard Gina Bachauer International Piano Competition, and the E. Nakamichi Piano Concerto Competition at the Aspen Music Festival. He was also one of twelve semi-finalists in the prestigious Naumburg International Piano Competition, as well as a prizewinner at the International Stravinsky Awards and the J. Earl Lee National Piano Competition.

Mr. Weldon has performed numerous times with orchestra, including appearances with the Buffalo Philharmonic, the



Evanston Symphony, the Juilliard Symphony, the Brno Chamber Orchestra, and the Aspen Concert Orchestra. As a soloist Mr. Weldon has appeared at the Landon Gallery, the Kosciuszko Foundation, Pick-Staiger Concert Hall, the Ordway Theater and the Juilliard Theater. He is also renowned as a chamber musician, performing in such venues as Alice Tully Hall, Steinway Hall, the Museum of Modern Art, the Phillips Collection, Alfred Newman Recital Hall, as well as the Herbert Zipper Concert Hall, Walt Disney Concert Hall, the San Francisco Legion of Honor and Sundin Hall. Mr. Weldon has collaborated in chamber music with principal players of the Metropolitan Opera Orchestra, Pittsburgh Symphony, San Francisco Symphony, the Buffalo Philharmonic and the Los Angeles Philharmonic, and has served as a collaborative artist at the San Francisco Conservatory, Colburn School, and University of Southern California.

He has also performed at festivals in the United States and in Europe, including solo appearances at the International Chopin, Verbier, and Aspen music festivals. As part of the New Juilliard Ensemble, Mr. Weldon performed in the U.S. premiere of Pierre Boulez's *Sur Incises*, conducted by David Robertson, and has frequently appeared as soloist in Juilliard's *Focus* festival. He has also been a featured artist on WNYC in "The Listening Room", and on WQXR's "McGraw-Hill Young Artists showcase". Mr. Weldon has been invited to conduct master classes at San Jose State University, the Central Minnesota Music School, the St. Francis Music Center, and the Orange County High School for the Arts, and frequently serves as an adjudicator for the Music Teacher's Association of California.

Christopher Weldon completed his Doctor of Musical Arts degree from the Juilliard School where his previous teachers include Abbey Simon, Jacob Lateiner, Felix Galimir and Tobey Appel. He currently resides in Los Angeles, where he balances a career as a soloist, collaborative artist, and teacher.

LADSO 2006-2007 Concert Program

November 19, 2006 (Sunday) Temple Judea (Tarzana)	2:30 p.m.
December 12, 2006 (Tuesday) Fairfax High School (Los Angeles)	7:30 p.m.
March 11, 2007 (Sunday) Culver City Veterans' Memorial Auditorium	3:00 p.m.
March 18, 2007 (Sunday) West Hollywood Auditorium	7:00 p.m.
May 4, 2007 (Friday) 88 Piano Keys: A Benefit Concert for Music Education Olympic Collection-Grand Ballroom (West Los Angeles)	7:00 p.m.

Upcoming Concerts

May 6, 2007 (Sunday) Alpert Jewish Community Center (Long Beach)	2:30 p.m.
June 3, 2007 (Sunday) Plummer Park (West Hollywood)	2:30 p.m.
June 12, 2007 (Tuesday) Fairfax High School	7:30 p.m.
June 24, 2007 (Sunday) West Valley Jewish Community Center (West Hills)	2:30 p.m.
June 30, 2007 (Saturday) Scripps Home (Altadena)	7:30 p.m.
July 4, 2007 (Wednesday) Roxbury Park (Beverly Hills)	3:00 p.m.

Congratulations

to



The Los Angeles Doctors
Symphony Orchestra

for your continued dedication to
great music making

With deep appreciation, always

Ivan Shulman

Music Director
The Los Angeles Doctors
Symphony Orchestra

in Loving Memory of

Bina Rosenbloom

a lover of music and an admirer of

L.A.D.S.O.

All Rosenbloom and Family

WE'RE PROUD
TO SUPPORT
THOSE IN
TUNE WITH
TOMORROW.



Yamaha ♦ Bösendorfer ♦ Schimmel ♦ Knabe

Keyboard Concepts and David L. Abell-fine pianos are proud to share our congratulations and support. As the exclusive dealer for Yamaha in the City of LA and for Bösendorfer and Schimmel in Southern California,

DENNIS HAGERTY'S

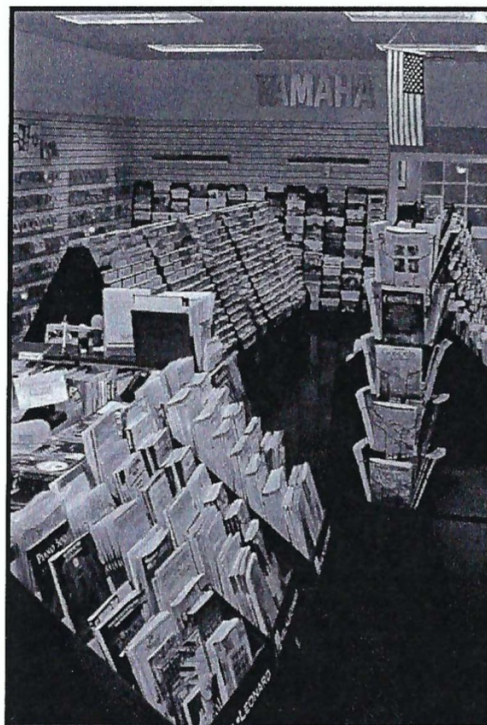
**KEYBOARD
CONCEPTS** 

keyboardconcepts.com

we offer the area's finest selection of new, used and rental pianos.

**Los Angeles ♦ West LA/Santa Monica
San Fernando Valley
Ventura County ♦ Orange County**

For directions or information, call 1-800-22-PIANO



WE'RE PROUD
TO SUPPORT
MUSIC
TEACHERS IN
WEST LA.

Teacher Discounts Available + Free Parking.

Keyboard Concepts of West LA offers you:

- Alfred, Henley, Bastien, Faber & Faber & More
- Certificate of Merit Supplies
- Metronomes, Manuscript & Music Software
- Artist Benches, Lights & Gifts
- Jazz Methods, Fake Books & Popular Music

DENNIS HAGERTY'S

**KEYBOARD
CONCEPTS** 

keyboardconcepts.com

**3232 Santa Monica Blvd.,
Santa Monica, CA 90404**

Call: 310.586.5588

dhhow studio for advanced piano studies



commends the continued dedication
of the
Westside Music Foundation
and the

Los Angeles Doctors
Symphony Orchestra

to excellence in music education
and accessible concert performances
for the local community

Deborah H. How
www.musette.org

Congratulations

to the

Westside Music Foundation

and the

Los Angeles Doctors
Symphony Orchestra

for their

*continued commitment to
music education*

Best Wishes,

Sylvie Ollivier Moreland

CONGRATULATIONS
TO

DEBORAH HOW
DIANE BLOOMER
SYLVIE OLLIVIER
ELAINE DAI
CHRISTOPHER WELDON

FOR PUTTING YOUR VISION
INTO ACTION

WISHING YOU SUCCESS,

LARRY S. BLOOMER, PRESIDENT
R. E. DEVELOPMENT GROUP
COMMERCIAL REAL ESTATE SERVICES

310-474-3666

CONGRATULATIONS!

LOS ANGELES DOCTORS
SYMPHONY ORCHESTRA

AND

WESTSIDE MUSIC FOUNDATION

FOR YOUR COMMITMENT
IN BRINGING MUSIC
TO OUR COMMUNITY

DIANE BLOOMER
TREASURER, WESTSIDE MUSIC FOUNDATION

for the students of
St. Anne School

May you enjoy
a life-long love
of music!

Elaine Dai
Brentwood Piano Studio

(310) 979-8080
www.brentwoodpianostudio.com

Congratulations!

to the
Los Angeles Doctors
Symphony Orchestra

and the
Westside Music Foundation

*for their commitment
to music education
for the future generation*

Richard Chen
President, LADSO

Thank you,

TO THE LOS ANGELES DOCTORS SYMPHONY ORCHESTRA FOR GIVING ME THE OPPORTUNITY TO PLAY VIOLIN WITH ALL OF YOU FOR THE PAST TEN YEARS.

A SPECIAL THANKS TO THE OTHER 2ND VIOLINS. WE ARE A GREAT GROUP. I LOVE YOU ALL.

TO IVAN SHULMAN, FOR BEING OUR CONDUCTOR AND PUTTING UP WITH MY SPEAKING OUT OF TURN. A LITTLE YELLING BETWEEN FRIENDS WHO CARE ABOUT EACH OTHER IS VERY NEW YORK!

TO MY FELLOW COUNCIL MEMBERS WHO STRUGGLE WITH THE RESPONSIBILITY AND COMPLEXITY OF RUNNING A COMMUNITY ORCHESTRA. IT AIN'T EASY, FOLKS.

TO DEBORAH HOW OF THE WESTSIDE MUSIC FOUNDATION, WHOSE ENTHUSIASM AND KNOWHOW MADE THIS EVENING POSSIBLE. AND SHE DID IT ALL WITH HUMOR AND PATIENCE.

TO ALL THE WONDERFUL PIANISTS WHO WILL PLAY TONIGHT. IT HAS BEEN AN HONOR TO BE IN THE ORCHESTRA PLAYING WITH YOU,

LOVE,

ETHEL MC CLATCHEY

Best Wishes!

to the Westside Music Foundation and the
Los Angeles Doctors Symphony Orchestra

From Nora Graham and Bright Prospect,
helping young people find a future

Ladies...are you tired of driving cars not designed with you in mind...where there is no place to put your purse, other than by your passenger's feet or on the back seat?

Help support a young lady who has beaten stiff competition and has been accepted into the nation's premier school of auto design: Art Center School of Design in Pasadena.

Nubia is a real self-starter. A first-generation-to-college student raised by a single mother who separated from an abusive husband, Nubia excelled at Montclair High School, and, although accepted at a number of private colleges, chose to enroll at Cal State Long Beach because of its outstanding graphic arts/industrial design curriculum. Nubia has supported herself through school working at Bank of America, being promoted several times because of her competence.

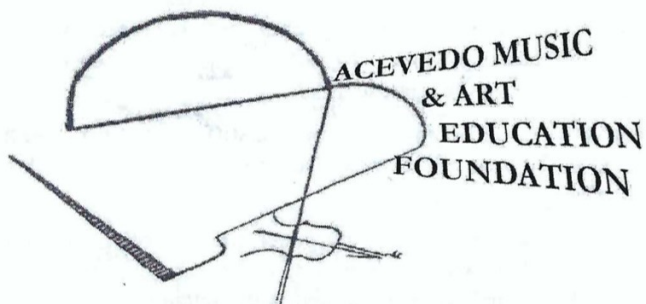
After four years at Cal State Long Beach, Nubia has realized her dream: to be accepted to Art Center School of Design as a Transportation Major. Art Center does not have the resources to give low-income students enough financial aid to make it possible to attend without incurring a huge amount of debt.

Nubia is a student served by the Bright Prospect Scholar Support Program, which helps high-achieving students from low-income families access the nation's top colleges, and continues to mentor and support them until they reach college graduation. Bright Prospect Scholars are graduating this year from colleges including Swarthmore, Smith, Bucknell, Pomona, Harvey Mudd, Scripps, Skidmore, Oberlin, UC Irvine, and has students attending Yale, Harvard, Princeton, Stanford, Amherst, Carleton, Franklin & Marshall, Connecticut, Mt. Holyoke, Vassar, Macalester, Occidental, Dartmouth, Bowdoin, Bates, Wesleyan, several UC campuses and other outstanding institutions.

Bright Prospect is a 501(c)3 non-profit organization. If you would like to make a donation toward a scholarship for Nubia, or if you know anyone who would be interested in supporting a young woman's dream to become an auto designer, please contact Bright Prospect's Executive Director, Stephanie Campbell (daughter of Nora Graham of LADSO) at (909) 623-9007. Please visit Bright Prospect's website at www.brightprospect.org for more information.

Thank You!

to the Westside Music Foundation and the
Los Angeles Doctors Symphony Orchestra
for your dedication to music education



Our Mission Statement
to facilitate philanthropic endeavors of
talented students using Art and Music
to serve and enlighten
the community

Artist Directors: John & Yin Yin Huang Acevedo
President: Lynn Wen
Vice- President: Tatevik Simonian
Treasurer: Mark Chen
Secretary :Joey Aguas
Directors :Diana Ou, Grace Lu, YouShan Wang

501 N.Hidalgo Ave.
Alhambra, CA 91803
Tel: (626) 289-9750
Fax: (626) 289-2166

www.acevedofoundation.org
Email: AcevedoFoundation@yahoo.com

Congratulations

to Lawrence Lee, Harriette Tuntomo, & Shannon Hsu
on your performances tonight!

Greetings & Best Wishes

to the
Los Angeles Doctors Symphony Orchestra
and the
Westside Music Foundation

DnA

DAVID WEISS
oboe, English horn,
musical saw

ALPHA H. WALKER
keyboards



A cut above the rest!!



Weddings, Private Concerts, Receptions,
Parties and other Special Occasions.

(310) 337-0962 www.davidweissgallery.com



CORKYBIRD ENTERPRIZES

CREATIVE DESIGNS FOR MUSIC EDUCATION

WE DESIGN MATERIALS
TO SUIT YOUR NEEDS

- Flash Cards
- Large-note Editions
- Sight-reading Materials
- Building-block Editions
- Musical Greeting Cards

(310) 569-2247
www.corkybird.com



CAREY BETH HOCKETT

Best Wishes

to the

Los Angeles Doctors
Symphony Orchestra

and the

Westside Music Foundation

in their pursuit of excellence
in music education

and in their endeavors to
make music available in
public concerts

Congratulations!

Dr. Paul M. Choi
Dr. Young Nam Choi
Michelle & Tommy

Congratulations!

to the

Westside Music Foundation

and the

Los Angeles Doctors
Symphony Orchestra

for their support of music
education in the community,

and a special

Thank You

to

Rufus Choi and Deborah How
for sharing their music
with our family

Harry & Bo Kyung Chung
Richard & Michael

Congratulations!

to the

Westside Music Foundation

and the

Los Angeles Doctors
Symphony Orchestra

Wishing you
continued success
in promoting excellence
in music education,

Dr. Jae Yoo & Mrs. Sunee Yoo
Daniel & Tabitha

CONGRATULATIONS

TO THE

WESTSIDE MUSIC FOUNDATION

AND THE

LOS ANGELES DOCTORS
SYMPHONY ORCHESTRA

FOR THEIR COMMITMENT
TO MUSIC EDUCATION

BEST WISHES,

STEVE & ROBIN KIM
ELIZABETH, ANDREW, & MADELINE

Congratulations

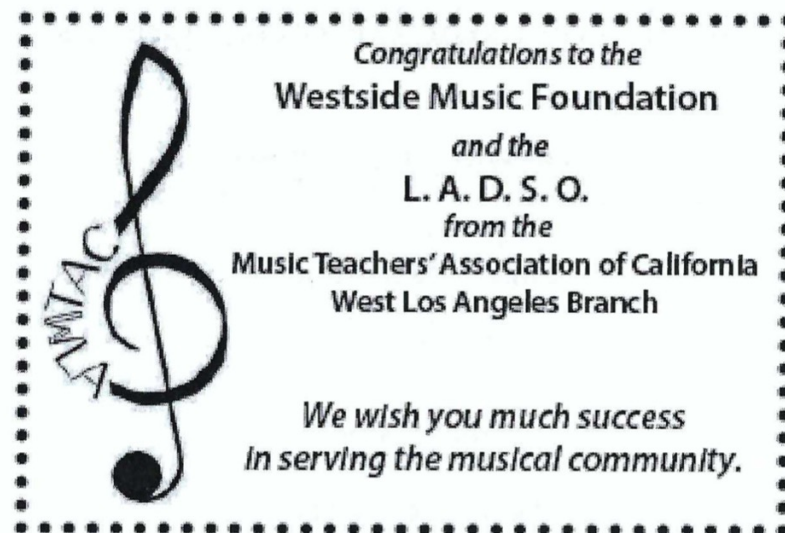
to the
Westside Music Foundation

and the
Los Angeles Doctors Symphony Orchestra

for your dedication and commitment to music
education in our community

We applaud you all!

Jim Cheung and Joanne Hwang
Stephen J. Densmore and Laurie Densmore
Cynthia Garcia
Ellen Gelbard and Joseph Zell
Barbara Greenstein and Jonathan Horne
Joseph Lawrence and Dr. Mary Cadogan
Eriko Matsumoto and Barry Rosenbaum
Alan Seltzer
Martin T. Tachiki and Karen Tachiki



A Special Thank You

to

Darien Morea
Senior Catering Manager

and the

Olympic Collection
Banquet & Conference Center

for helping make our dreams come true!

Deborah H. How & Diane L. Bloomer
Co-Founders, Westside Music Foundation

Thank You to the Following Donors

Yin Yin Huang Acevedo
Acevedo Foundation for Music & Art Education

Mike & Elaine Agran

True Archdale

Nancy Arnold

Barbara & Ted Bell
Saul D. Levy Foundation

Larry & Diane Bloomer
R. E. Development Group

Dr. Richard Chen

Dr. & Mrs. B. Crausman

Elaine Dai
Brentwood Piano Studio

Danielle Egerer & Paul Seydor

Dennis & Patty Eisenberg

Dr. Nancy Fierro

Deborah H. How & Brian Tung
dhhow studio for advanced piano studies

Your Support is Greatly Appreciated

Robert & Peggy Inadomi

Cherrl Lou Jacobson

Edna F. Jennings

Kathie Johnson

Joseph Lawrence & Dr. Mary Cadogan

Lisa Donovan Lukas

Ethel & Bill McClatchey

Bruce Milner

Sylvie Ollivier Moreland

Dr. Mary Lou Rotenberg

Alan Seltzer

Dr. Ivan Shulman

Lydia D. Steadman

Lonnie Steinberg

Glenn & Rosa Lo Wong

Congratulations

Westside Music Foundation
and
Los Angeles Doctors Symphony Orchestra
on your commitment to music education

Pierre's Fine Pianos

11039 West Pico Boulevard
Los Angeles 90064

(310) 473-0600

Pierre Julia
Owner



exclusive dealer for

FAZIOLI

100-Seat Recital Space Available

www.pierresfinepianos.com

a very special thank you

to the
Westside Music Foundation

and the
**Los Angeles
Doctors Symphony Orchestra**

for making the
instrumental music program
a reality at our school

From the administration, teachers, staff,
families, & children of

St. Anne School

2015 Colorado Ave
Santa Monica, CA 90404
(310) 829-2775

Mr. Michael Browning
Principal



YAMAHA PIANOS

© 2007 Yamaha Artist Services, Inc. All Rights Reserved.